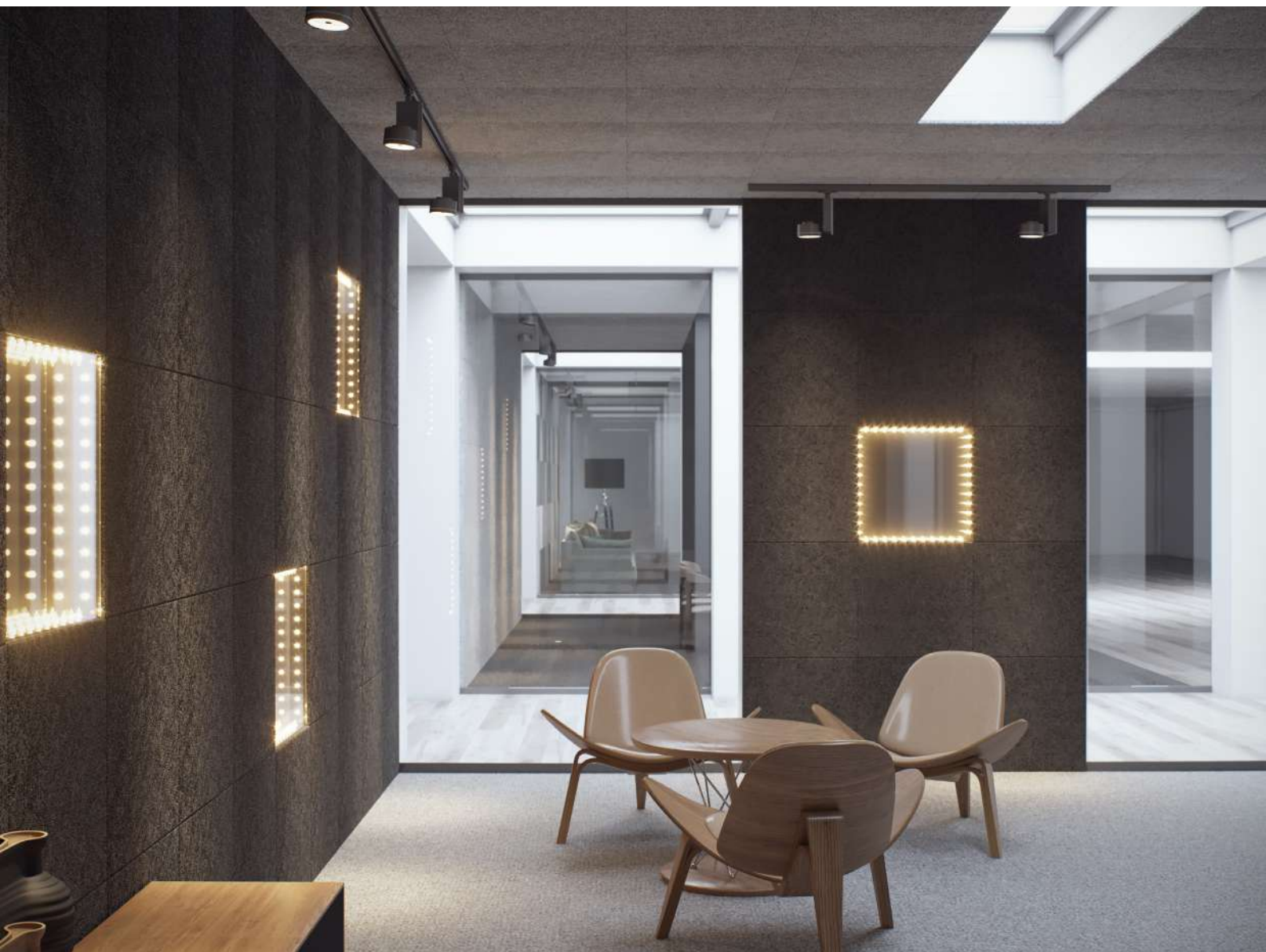




**Installation instructions**  
**KRAFT WoodAcoustic acoustic panels**  
**on the frame with fastening elements**

Before starting the installation, it is advisable to prepare all the necessary tools and materials, namely:

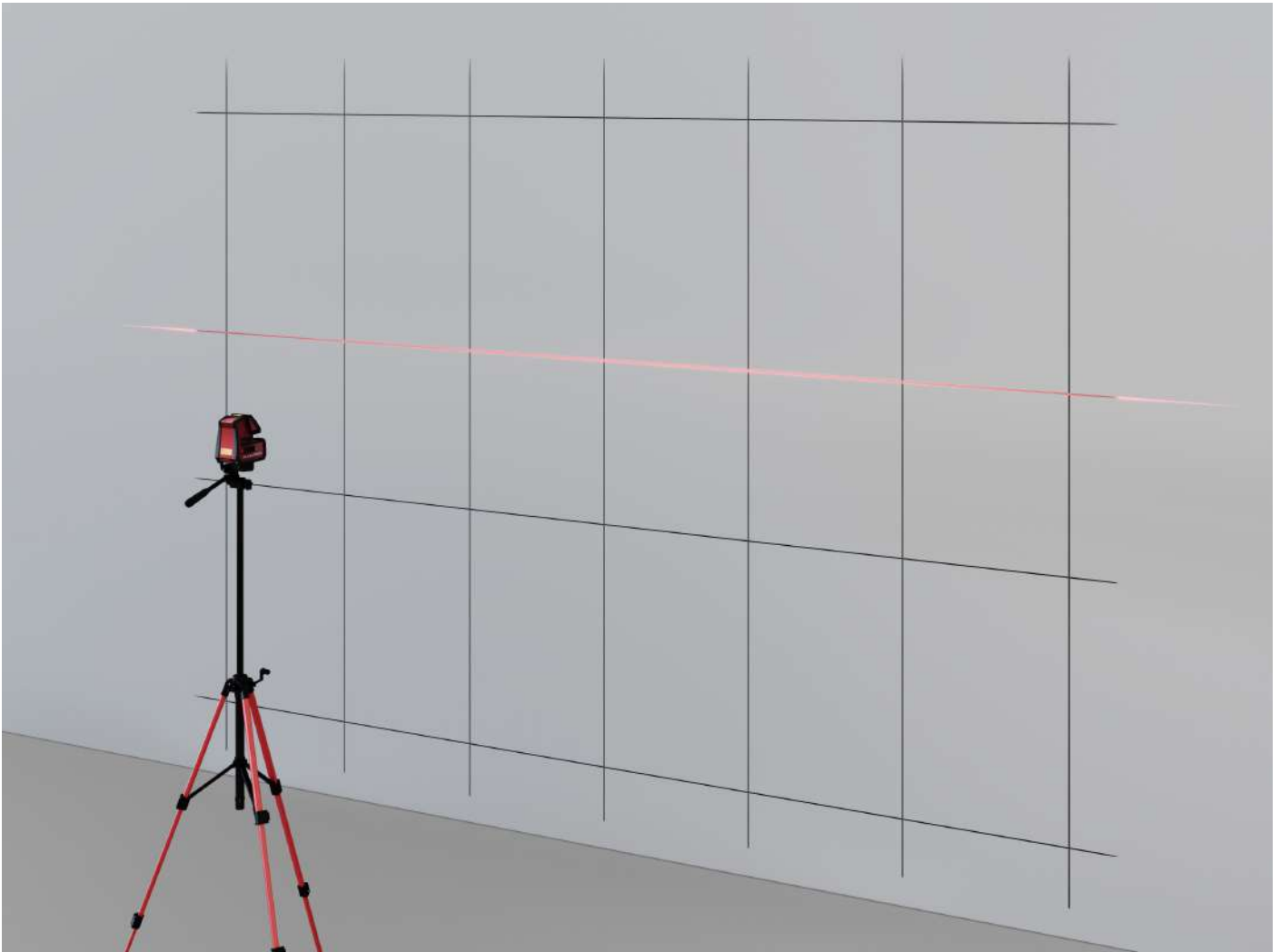
- Metal profile (CD60).
- Metal profile (UD27).
- Connecting elements and fasteners for profiles.
- Screws for connecting profiles and attaching drywall.
- Mineral wool 50 mm.
- Building level.
- Screwdriver.
- Perforator.
- Fiberboard panels.



## Step 1

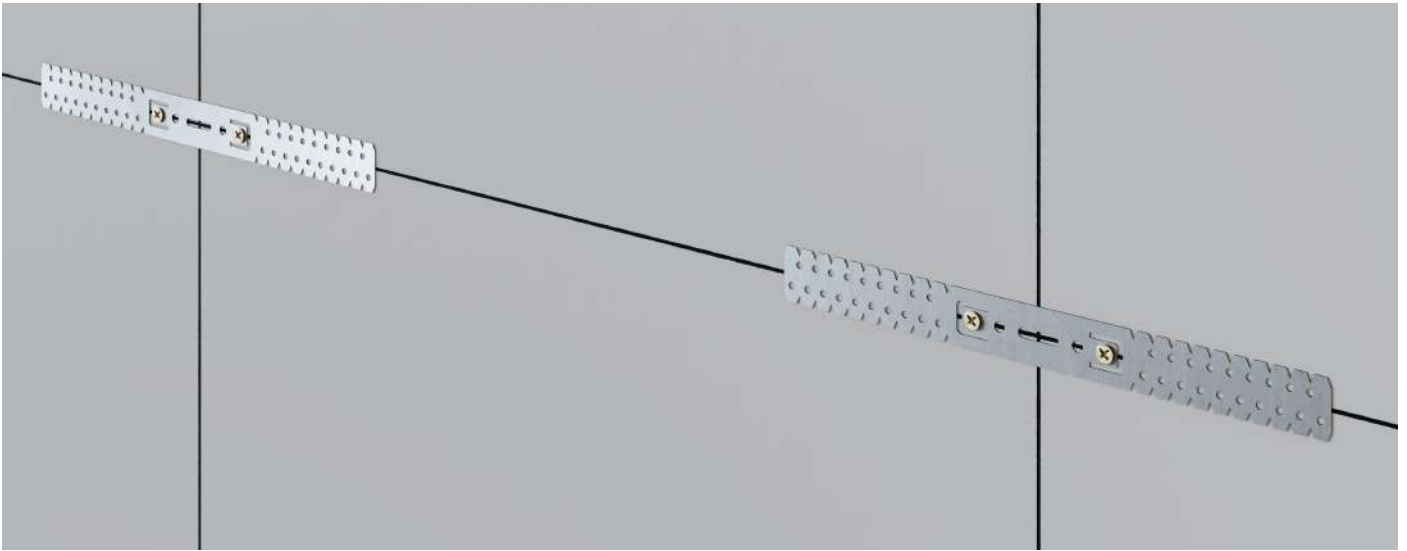
1. Create markings for the future structure. The diagram is indicated by red lines. For the installation of fiberboard panels measuring 1200×600 mm, the distance between horizontal and vertical profiles should not exceed 600 mm to the center of the CD-60 profile.

If smaller-sized fiberboard panels are planned for installation, proportional reduction and marking for the future structure are necessary so that all edges of the fiberboard panel overlap the profile by 30 mm on each side during the next installation.



## Step 1

2. Prepare guide profiles: cut them to the required length if necessary.



3. Align one edge of the profile with the marked line and drill holes for expansion plugs using a perforator. Attach the profile. The profile should be secured at a distance from the wall equal to the thickness of the mineral wool, recommended at 50 mm for optimal sound insulation and absorption.



## Step 1

4. Along the vertical and horizontal lines, attach U-shaped brackets. Connect the profile intersections with “crabs”.
5. If it is necessary to add lengths to CD profiles, do so using longitudinal connecting sleeves.



6. The hangers are fixed at a distance of 600 mm from each other. It is customary to reinforce the profile when assembling the wall frame with a spacing of 600 mm and the installation of transverse stiffening ribs – this is a standard scheme for positioning load-bearing posts.
7. Install the CD profile.



## Step 2

Fill the gaps between the profiles with mineral wool. It is advisable to apply glue to the wall to prevent the wool from slipping.



## Step 2



## Step 3

Secure the panels to the frame using high-quality self-tapping screws. The edges of the panels should align with the centers of the profiles. The self-tapping screw is screwed in 15 mm away from the edges of the panels.





## Step 3

The installation of acoustic panels on the frame is complete.

